



# The Prevention Centre's Emerging Leaders Network

The Australian Prevention Partnership Centre's Emerging Leaders Network (ELN) offers networking and capability building opportunities for early and mid-career researchers, policy makers and practitioners working in prevention across Australia.

ELN members work in prevention across universities, research institutes, government departments and agencies, and non-government organisations around Australia. Many of our members are closely affiliated with the Prevention Centre through our research projects, our current funding partners, or through the Collaboration for Enhanced Research Impact (CERI).



Join the Emerging Leaders Network

Once you join the ELN, you can access the following initiatives and activities:

## Webinars, workshops, networking events and symposia

Connect with early to mid-career researchers, policy makers and practitioners from across Australia at our regular events. These events provide an opportunity to hear from leading Australian experts in prevention and share insights from emerging leaders' own work. Previous topics include monitoring and regulating harmful industries, junk food advertising, and the impact of COVID-19 on mental health. The Prevention Centre also holds regular webinars on science communication and advocacy for prevention.

We have also developed a [User Guide](#) with practical tips for knowledge mobilisation and science communication collated by the members of CERI.

## Communities of practice

Our ELN members are invited to participate in our communities of practice, which deliver learning, mentoring and networking opportunities in topics of shared interest including:



Public health law



Qualitative research



Citizen science in prevention



Science communication

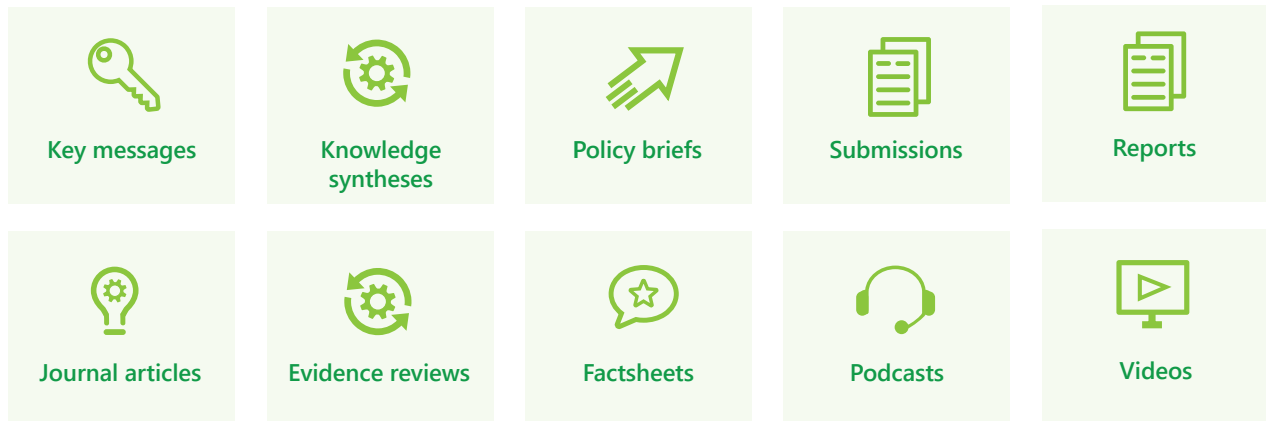
## Research-policy partnerships

Over the last 10 years, the Prevention Centre has brought together Australia's leading researchers in many aspects of prevention, including in liveability, modelling, overweight and obesity, implementation, evaluation and scale up, regulation and governance, and economic evaluation. Our emerging leaders are at the forefront of generating new research-policy partnerships to increase the impact of prevention in Australia.



## Resources

The Prevention Centre website is a repository of evidence-informed information, tools and resources for policy makers and practitioners. These include:



### Prevention Post

ELN members can nominate to receive the weekly *Prevention Post* newsletter that contains events and opportunities targeted at a prevention audience.

### The Chronicle

*The Chronicle* is a monthly newsletter about the Prevention Centre's people and projects. It features resources and events related to systems thinking and the prevention of chronic disease.

### Prevention headlines

The Prevention Centre scans media headlines daily for prevention-related media stories, [bookmark this page](#) to follow public discussion.

### Social media

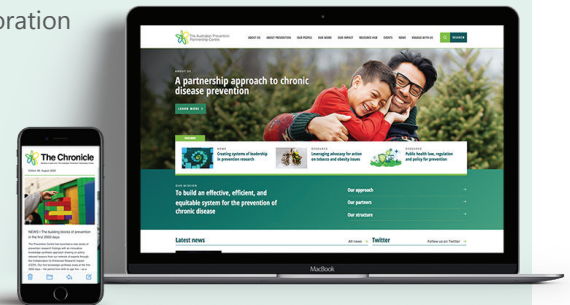
Follow us on social media to keep up to date with developments in Australia's prevention community.



## About the Prevention Centre

The Australian Prevention Partnership Centre is a national collaboration of researchers, policy makers and practitioners working together to support the prevention system in Australia.

We aim to provide decision makers with the best evidence and tools to inform their policies and programs. We deliver internationally significant knowledge about the application for prevention of a systems-based approach, implementation science and systems modelling.



**Contact us to join the network or if you would like to arrange a chat to find out more at:**

[preventioncentre@saxinstitute.org.au](mailto:preventioncentre@saxinstitute.org.au)

### Our funding partners



The Prevention Centre is managed by the Sax Institute



The Australian Prevention Partnership Centre



© Sax Institute 2024  
[preventioncentre.org.au](http://preventioncentre.org.au)