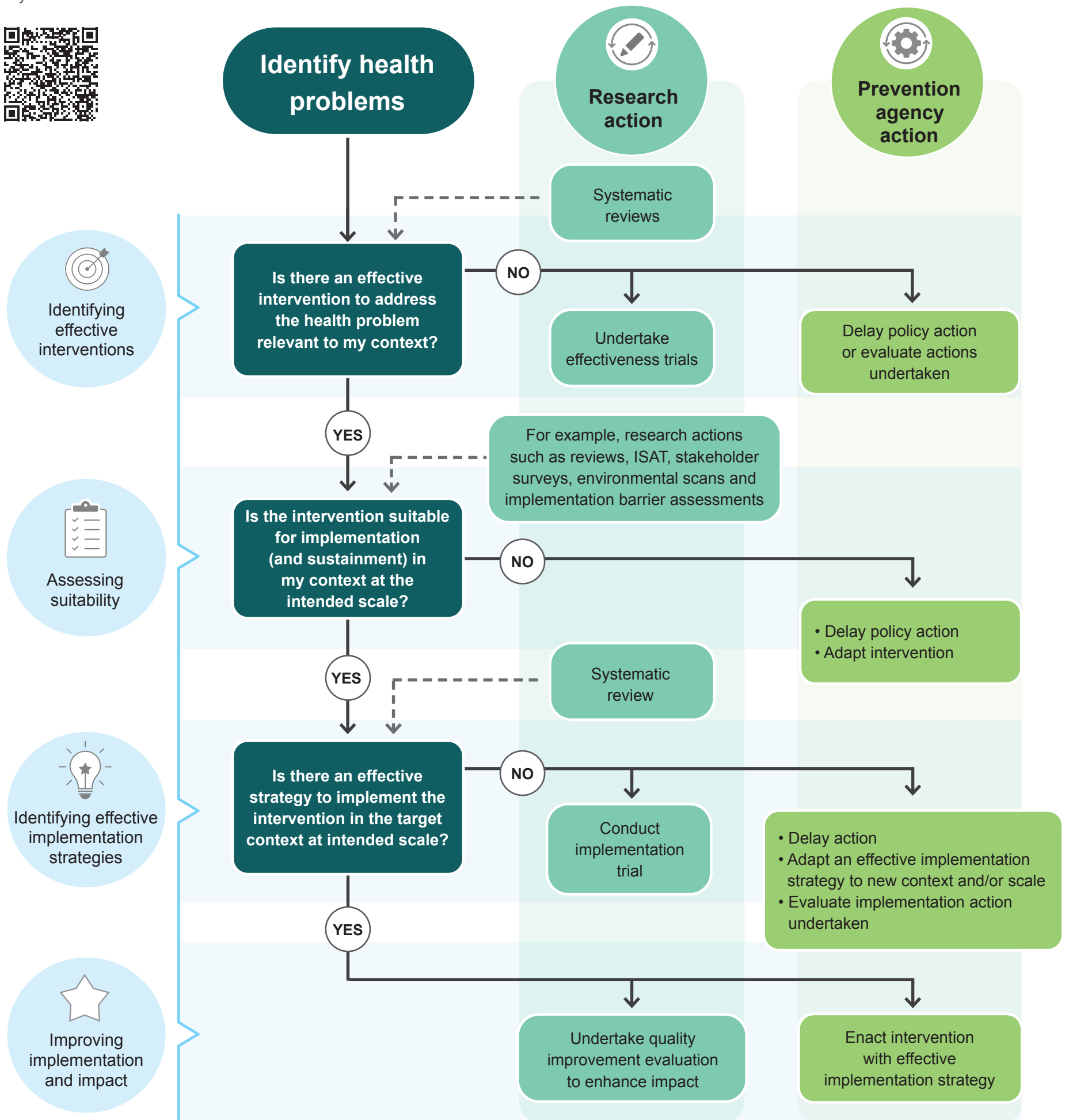


# The evidence to implementation pathway for chronic disease prevention

This decision tree provides an overview of the phases that characterise the implementation process, including key research and policy agency actions across each phase. The diagram was created as part of a synthesis of knowledge generated by the Prevention Centre and the Collaboration for Enhanced Research Impact in relation to implementation research for prevention.

Download the report and summary from our website



## Our funding partners

The Australian Prevention Partnership Centre is funded by the Australian Government Department of Health and Aged Care, ACT Health, Cancer Council Australia, NSW Ministry of Health, Tasmanian Department of Health, VicHealth, and Wellbeing SA.


The Australian Prevention Partnership Centre is managed by the Sax Institute.

The Australian Prevention Partnership Centre

 © The Sax Institute 2024

Email: [preventioncentre@saxinstitute.org.au](mailto:preventioncentre@saxinstitute.org.au)

Website: [preventioncentre.org.au](http://preventioncentre.org.au)

 Follow us @TAPPCentre