

# VicHealth



Monitoring unhealthy advertising online

NEED MORE MEN

STRONG FEMALE RESPONSE

~~CITIZEN SCIENCE~~  
NOT IN PITCH



STRONG RESPONSE TAKING MORE RESEARCHER TIME

# Tasmania

Assessing rural walkability



3x ONE ONLY HAS SMALL POOL TO CHOOSE FROM

IMPACTS ON ENGAGEMENT

FINDING KEY PEOPLE FOR ENGAGEMENT

DIFFERING EXPECTATIONS ADAPT TO SUIT NEEDS

# Wellbeing SA

Evaluating community gardens



WHAT & HOW TO RECRUIT

SHOW VALUE TO COUNCIL

REQUIREMENTS VS FLEXIBILITY

COUNCIL PARTNERS DIVERSE VIEWS TO APPROACH

# SWSLHD

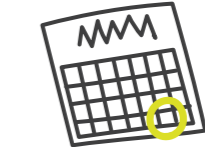
Evaluating urban regeneration



ETHICS APPROVAL NEEDED



MAY BE TOO STRUCTURED



BIG TIME COMMITMENT



COMPETING PRIORITIES

WORKSHOP:  
RECRUITMENT & ENGAGEMENT OF  
CITIZEN SCIENTISTS  
3rd March 2021

# CITIZEN SCIENCE IN PREVENTION COMMUNITY OF PRACTICE



drawn by kylie dunn  
dinkylune.com

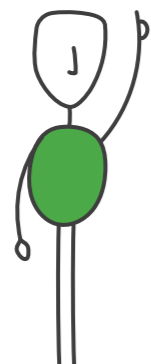
Should they be remunerated?



PARTNERS MIGHT REQUIRE IT



MORE MOTIVATED IF IT'S PASSION & INTEREST?



VALUE BASED ON THEIR CONTRIBUTION



Use of term 'citizen science' in the recruitment pitch



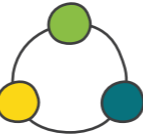
EMPHASISE PROJECT FIRST AS OPPORTUNITY TO CONTRIBUTE



VALUING THE CITIZEN SCIENTISTS



PERSPECTIVES



LIVED EXPERIENCE

Sustain engagement of citizen scientists throughout the project



REGULAR FEEDBACK & HOW THEY CONTRIBUTED



OPTIONS FOR PARTICIPATION THROUGHOUT



CLEAR POINT OF CONTACT - COMMUNITY CHAMPION MODEL

RECIPROCITY - TOOLS TO HELP THEM ADVOCATE

