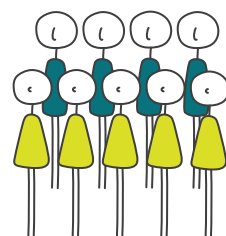


# VicHealth



Monitoring unhealthy advertising online

POSITIVE AND OVERWHELMING NUMBER OF RESPONSES



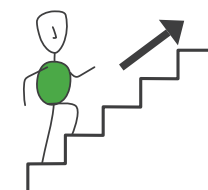
LESS KEEN ON FOCUS GROUPS BUT ACTIVE WITH SMS



WHAT MIGHT WE USE DATA FOR? POLICY? PROJECTS?



BUT THEY MIGHT ALSO BE THE REASON FOR POSITIVE CHANGE



ALL CHALLENGES BELOW ARE STILL IMPACTING DATA COLLECTION



TECHNOLOGY IS CHALLENGING - NEED A LOT OF ASSISTANCE



MORE INTENSIVE RELATIONSHIP MANAGEMENT IS NEEDED TO OVERCOME SOME OF THESE CHALLENGES

STRUCTURED DATA COLLECTION DIDN'T STOP THEM ADDING WHAT THEY WANTED



# Wellbeing SA



Evaluating community gardens

HAVE DONE SOME DATA COLLECTION

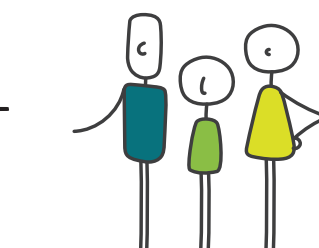
TWO NEW ONES THROUGH COUNCILS

DIVERSE GROUP

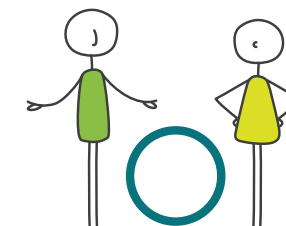


LIKED SHARING WHY THEY LIKED THE GARDEN AND WHAT IT MEANS TO THEM

TRYING TO FIND MIDDLE GROUND - OUR NEEDS AND PROCESS VS WHAT THEY WANT TO SHARE



THEY WERE CHUFFED TO BE ASKED ABOUT HOW THEY FEEL - ENJOYED THE PROCESS



WE WILL COMPLETE THE PROJECT



MOVING FORWARD, USING CITIZEN SCIENCE IS A TOOL TO SUPPORT OUT COMMUNITY ENGAGEMENT FOCUS

BUT NOT FOR QUALITATIVE IN FUTURE!



ROUGHLY 200 YOUNG PEOPLE ASKED AT TWO POINTS IN TIME



ALL DATA COLLECTION HAS BEEN DONE

DISSEMINATION STRATEGY DIFFICULT WHEN DON'T KNOW THE OUTCOMES

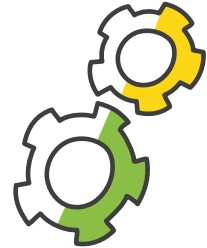


EXTERNAL COLLECTION SO NO DIRECT ACCESS TO DATA



DIGITAL IS FLUID - FACEBOOK HAVE ANNOUNCED CHANGES THAT MIGHT IMPACT THE OUTCOME/RELEVANCE

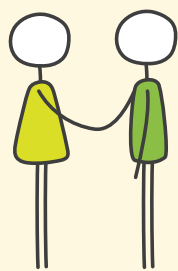
CHANGING COLLECTION AND USE OF DATA TO ADVERTISE TO YOUNG PEOPLE



## CITIZEN SCIENCE IN PREVENTION

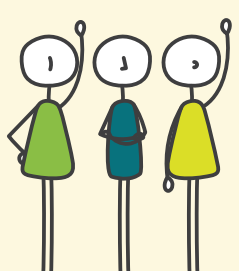
## COMMUNITY OF PRACTICE

### PREVIOUSLY IDENTIFIED CHALLENGES

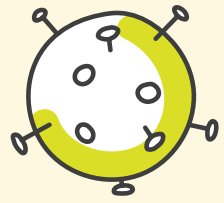


RELATIONSHIPS - ISSUES WORKING WITH PARTNERS

RECRUITMENT OF CITIZEN SCIENTISTS - LACK OF DIVERSITY



IMPACT OF COVID ON RECRUITMENT AND COLLECTION - AVAILABILITY OF STAFF TOO



SKILLS AND KNOWLEDGE AROUND USING CITIZEN SCIENTISTS



OUTCOMES NOT BEING USED OR ACTED UPON

ETHICS AND WHETHER THIS APPROACH WAS THE RIGHT ONE



PROJECT UPDATES 28th July 2021

