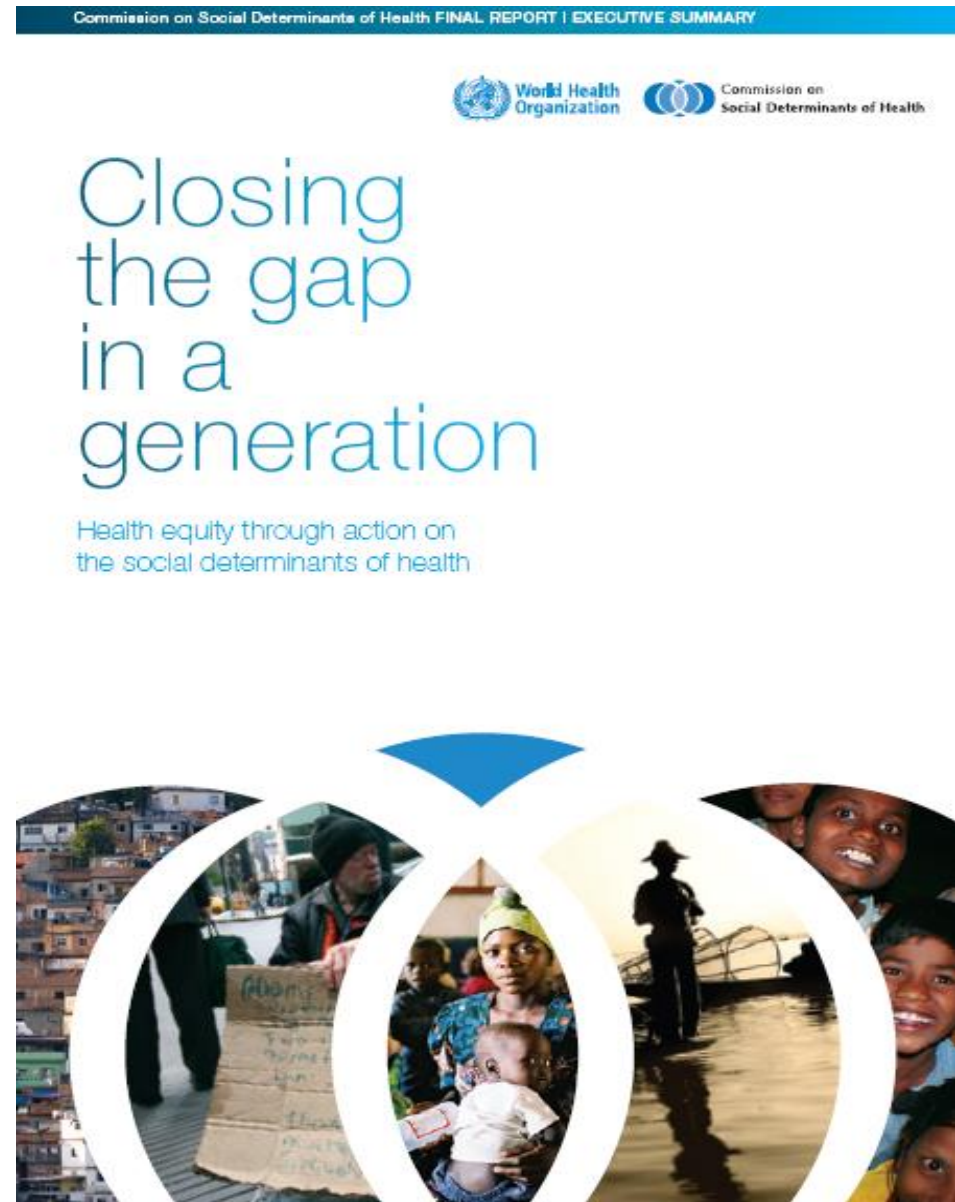


1. Improve daily living conditions
2. Tackle the unequal distribution of power, money and resources
3. Measure and understand the problem and assess the impact of action



- 1. Identify and keep hold of the goal**
 - Equity at the centre
 - A SDH approach
2. Fit for purpose evidence for action
3. Leadership and support structures
4. Understand the Realpolitik
5. Strategic engagement



Comprehensive Versus Selective Primary Health Care: Lessons For Global Health Policy

Meeting people's basic health needs requires addressing the underlying social, economic, and political causes of poor health.

by **Lesley Magnussen, John Ehiri, and Pauline Jolly**

ABSTRACT: Primary health care was declared the model for global health policy at a 1978 meeting of health ministers and experts from around the world. Primary health care requires a change in socioeconomic status, distribution of resources, a focus on health system development, and emphasis on basic health services. Considered too idealistic and expensive, it was replaced with a disease-focused, selective model. After several years of investment in vertical interventions, preventable diseases remain a major challenge for developing countries. The selective model has not responded adequately to the interrelationship between health and socioeconomic development, and a rethinking of global health policy is urgently needed.

Health Affairs, 23, no.3 (2004):167-176

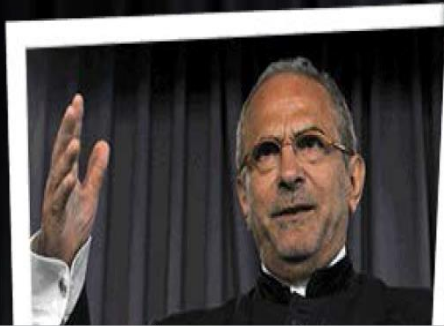


NATIONAL PRESS CLUB OF AUSTRALIA



Search

Principal Sponsor



- Home
- The Club
- Speakers
- Membership
- Entertainment & Dining
- Weddings & Events
- Photo Gallery
- Journalism Awards

Social Determinants of Health Forum

Martin Laverty, Dr Tom Calma and Kate Carnell

August 20, 2014

Arrive from 11.30am, lunch 12 noon, speaker 12.30 concludes 1.30pm

'A Year of Nothing: Why Australian Governments need to respond to the social determinants of health'

Previous Speaker

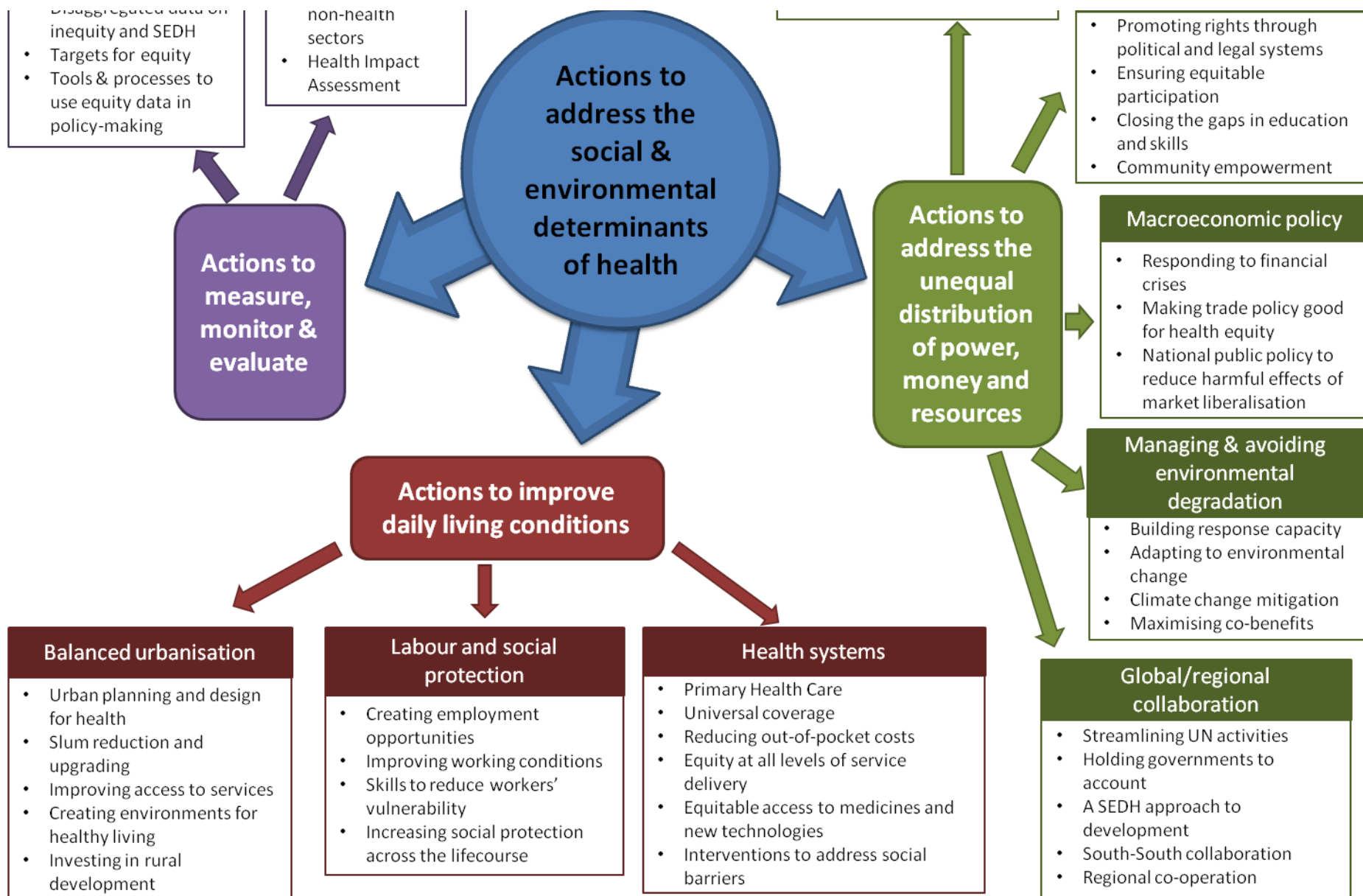
Social Determinants of Health Forum

[More Info](#)

Work and health, middle aged Australians



A SDH approach means ALL of this



A gameplan for action

1. Identify and keep hold of the goal
2. Fit for purpose evidence for action
3. Leadership and support structures
- 4. Understand the Realpolitik**
 - Framing is everything
 - Embrace the messiness
5. Strategic engagement



...While objective evidence-based approaches have been favoured in recent years, participants argued that **moral and ethical arguments** sit at the core of public policy. To disengage with these is to disengage with the issues around which political and policy arguments are fought and won...

A national conversation about inequity

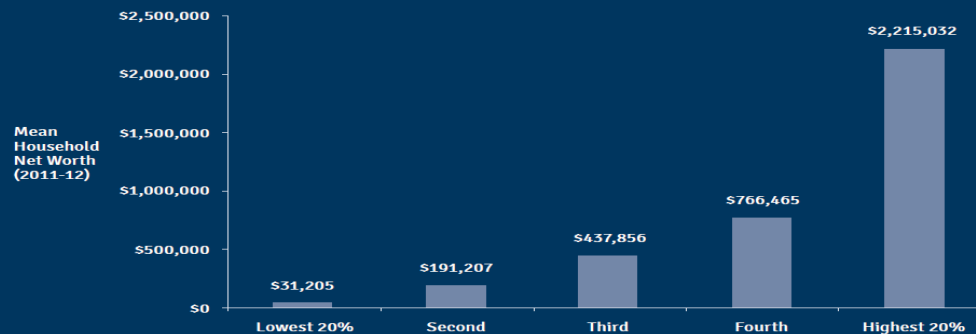


The Australia Institute
Research that matters.

Advance Australia Fair? What to do about growing inequality in Australia

Report following a roundtable held at Parliament House Canberra in January 2014
Bob Douglas, Sharon Friel, Richard Denniss and David Morawetz

Australian Wealth Inequality



Source: ABS, Household Income and Income Distribution, Australia, 2011-12